



Sundance® Spas

MAKING MOMENTS THAT MATTER

MOMENTS

Best spent with
people you love

It's one of the best feelings
in the world. As you sink
into the soothing waters of
a Sundance® spa, everything
melts away, creating family
moments that matter.

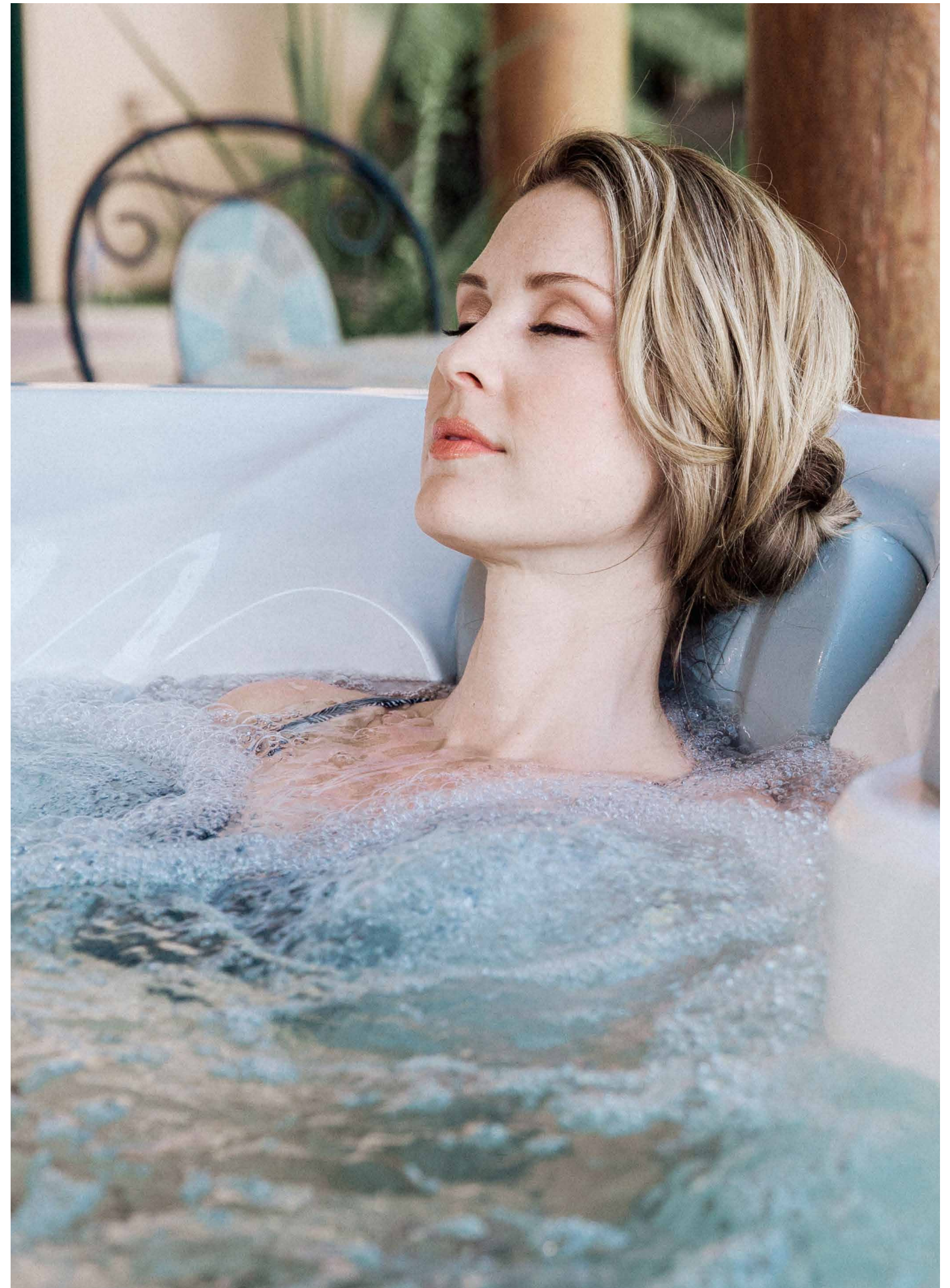
We call it the Sundance hug.



MOMENTS Relaxing

Settle in and let our exclusive Fluidix[®] jet technology do its magic—engineered to deliver the best hydromassage right where you need it.

Feel-good moments that bubble up again and again.



MOMENTS Playful

Rest assured you're playing in the crystal-clear waters of a Sundance® spa, made possible by our industry-leading MicroClean® filtration and proprietary ClearRay Active Oxygen® system. Easy breezy.

Your place for sharing good times.



MOMENTS Carefree

For over 45 years, we've been at the forefront of spa innovation, like our SmartTub® app with many automated features that help you save energy, ensure peak performance, and protect your spa.

Peace of mind, anytime.



Hot tub is installed on a synthetic pad. Rock is decorative only and not intended for installation.

Sundance makes it so easy to enjoy more feel-good moments in your spa. Pushing the boundaries in jet technology to deliver amazing hydromassage, simplifying clear water, and combining beautiful design with solid craftsmanship—all part of the Sundance legacy.

FEEL THE
Sundance
difference

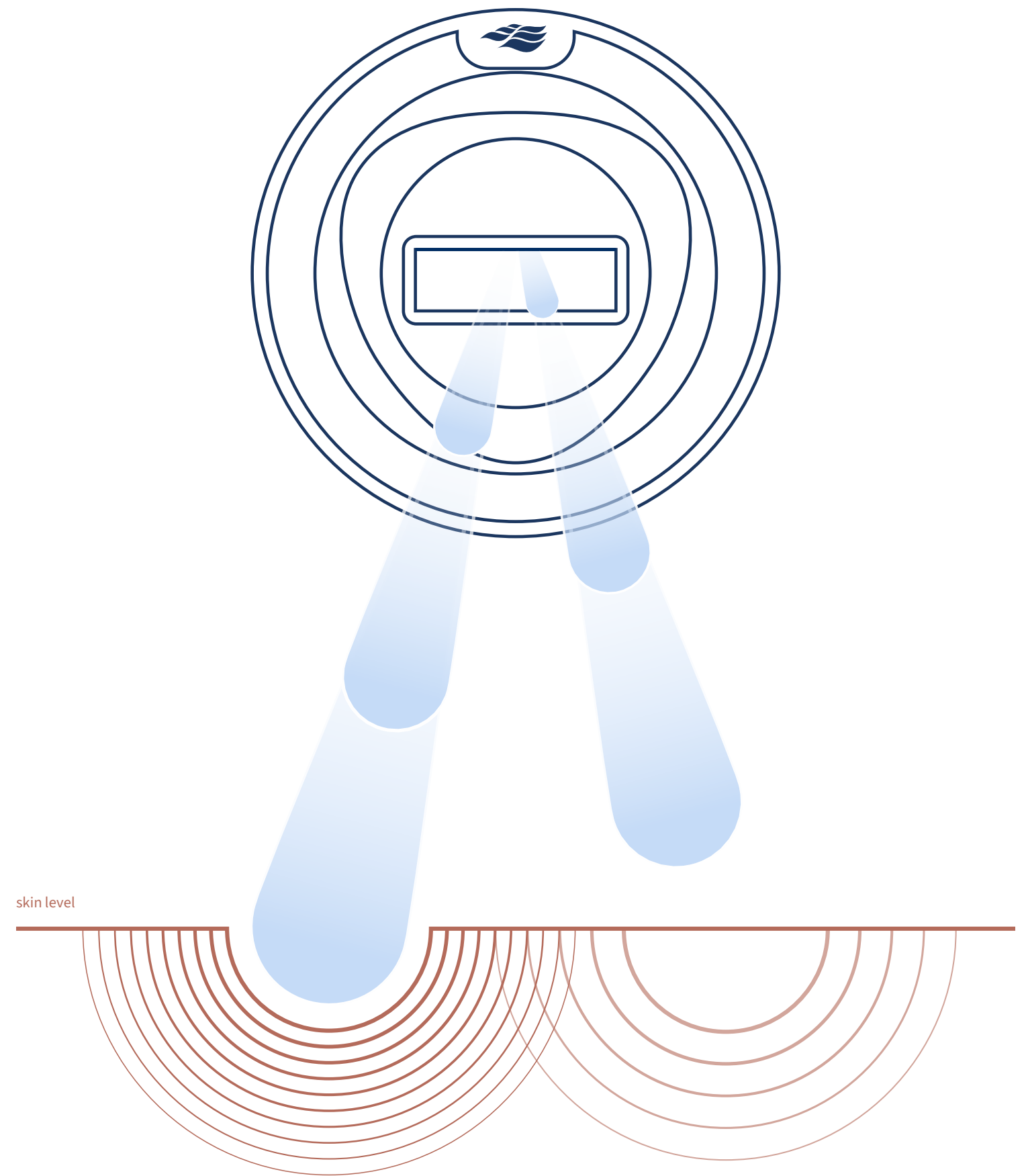
FLUIDIX® Technology behind it all

Our patented Fluidix technology, exclusively engineered with the global leader in fluid dynamics, manipulates air and water to deliver the best massage right where you need it.

No moving parts, so the jets won't clog or wear out.

The latest innovation in hydromassage technology brings a powerful percussive massage to your Sundance® spa with the Fluidix® PT™ Jet.

This exclusive jet delivers the focused power of percussive therapy with 360-degree rotation. It replicates the deep, targeted relief of a massage gun—zeroing in on key back muscles for a completely personalized massage. Available only on Sundance® swim spas and our 880™ Series.



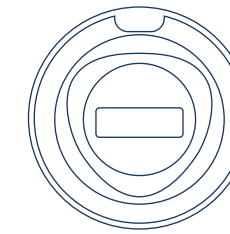
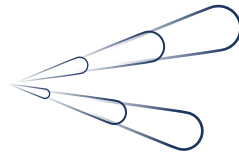
HYDROMASSAGE

Versatile, yet personal

All Sundance® spas deliver a variety of distinctly satisfying hydromassage types, powered by precision-engineered jets and patented technologies.

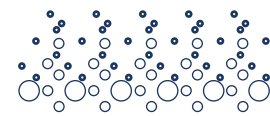
A powerful custom massage every time.

Percussive Therapy
Percussive streams of water that rapidly alternate for an invigorating, deep-tissue, adjustable massage.



Fluidix® PT™ Jet
Percussive streams alternate for a deep-tissue massage; jet face adjusts 360 degrees.

Relaxation
Air-focused soft-tissue massage mimics the subtle touch of fingers rubbing and patting the body.

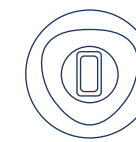


Silent Air® Injector Jet
Small, gentle stream of bubbles also diffuses SunScents™ Aromatherapy.

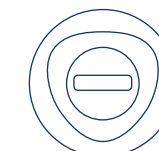


FocusRelief® Jet
Bubbles create a deep-tissue massage or effervescence for soft tissue.

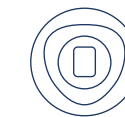
Muscle Release
Unique motion creates the sensation of fingers and thumbs firmly working into your muscles, increasing circulation and promoting overall relaxation.



Fluidix® ST™ Jet
Focused, muscle-release jet stream adjusts for intensity and pressure.

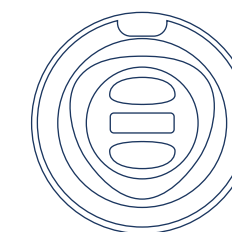


Fluidix® Reflex™ Jet
Adjustable, back-and-forth Swedish-style massage for circulation and relaxation.

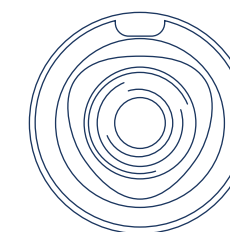


Fluidix® Nex™ Jet
Adjusts to relieve neck tension and strain in small muscles.

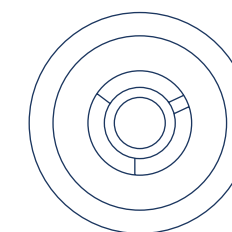
Deep-Tissue
Powerful water streams simulate strong hands deeply kneading large muscle groups to reduce tension and discomfort.



Fluidix® Intelli-Jet™
Adjustable water flow oscillates for a deep-tissue massage.

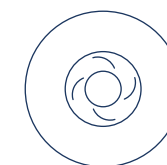


Vortex™ Jet
Adjustable rifling action creates a swirling high-and-low impact.



Whirlpool Jet
Vigorous, deep-tissue massage that is adjustable.

Pressure Point
Focused streams imitate firm fingers activating vital acupressure points to release strain and stimulate the body's energy.



Mini-Vortex™ Jet
High/low-impact targeted stream with rifling action, also adjustable.



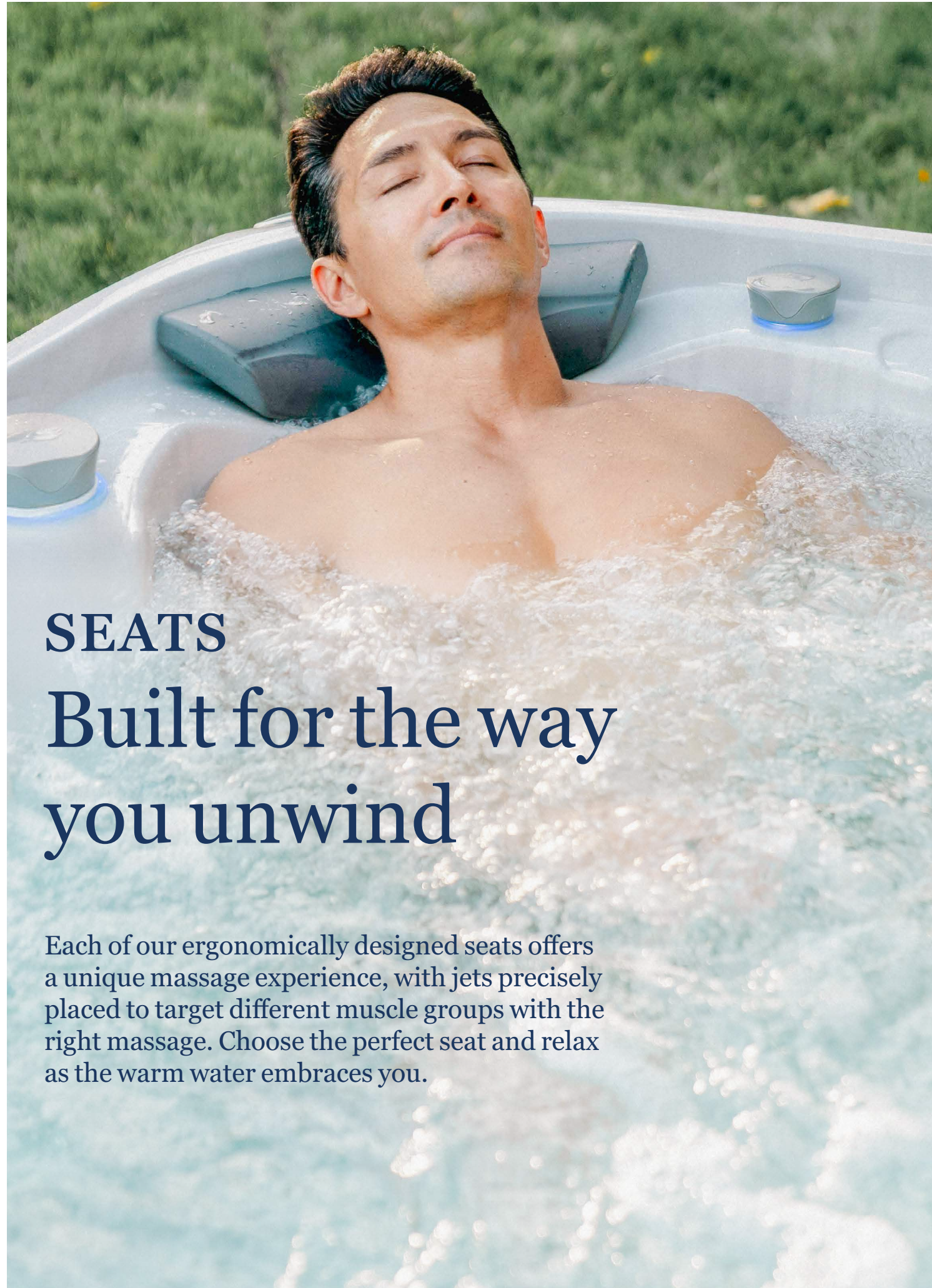
Accu-Pressure™ Jet
Deep-tissue massage to relieve muscle tension and joint pain.



SMT™ Micro Jet
Small, targeted massage to ease neck tension.

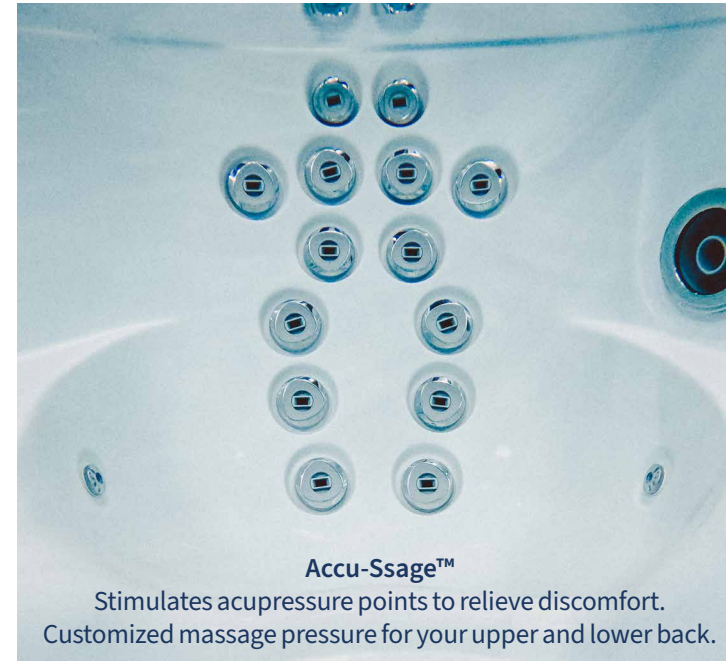


Adjustable Accu-Pressure™ Jet
Deep-tissue massage action that you control.



SEATS Built for the way you unwind

Each of our ergonomically designed seats offers a unique massage experience, with jets precisely placed to target different muscle groups with the right massage. Choose the perfect seat and relax as the warm water embraces you.



Accu-Ssage™
Stimulates acupressure points to relieve discomfort. Customized massage pressure for your upper and lower back.



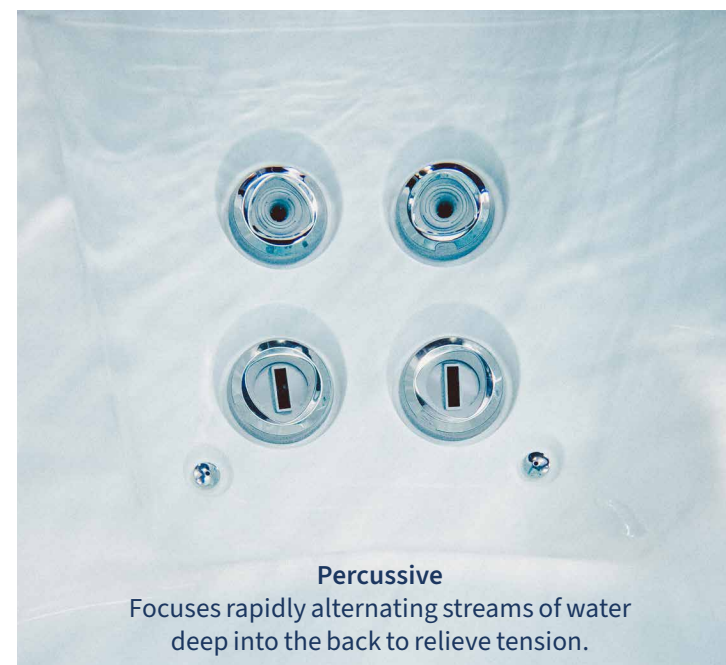
Sports
Configured specifically to relieve tension and reduce muscle soreness in the neck, shoulders, and back.



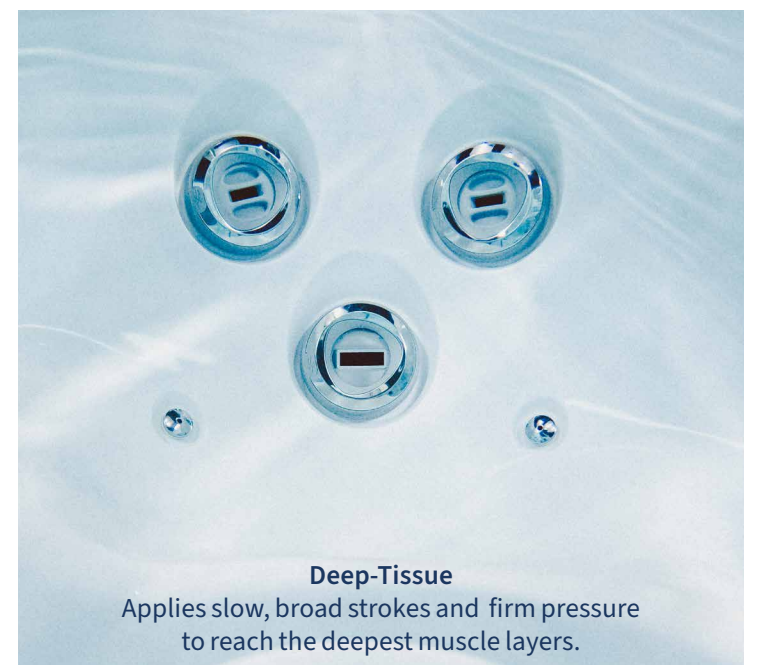
Swedish
Creates a deeply relaxing sensation with its distinctive kneading motion.



Full Body
Combines Swedish massage with a soft-tissue massage to soothe the legs and provide foot relief.



Percussive
Focuses rapidly alternating streams of water deep into the back to relieve tension.



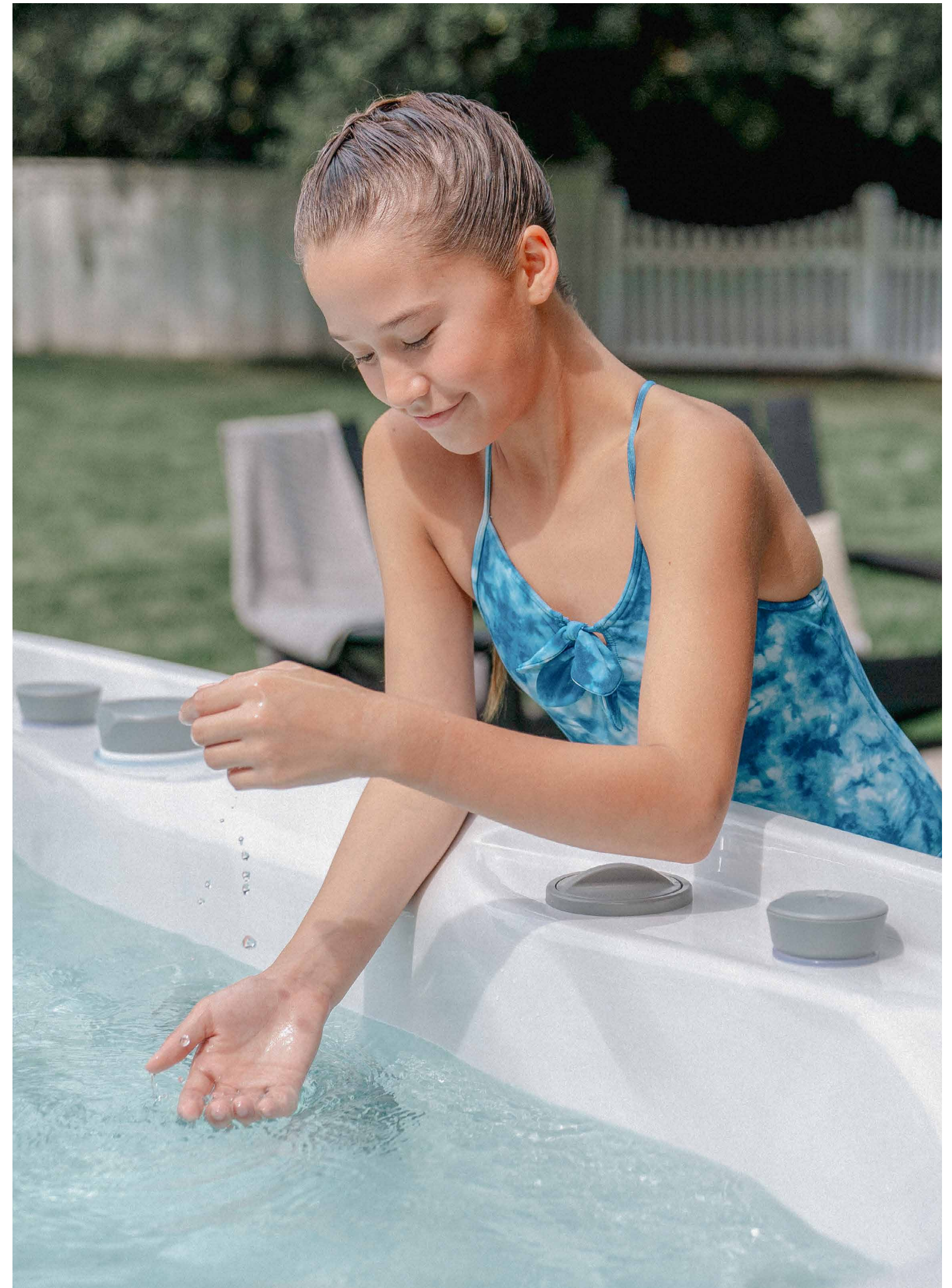
Deep-Tissue
Applies slow, broad strokes and firm pressure to reach the deepest muscle layers.

CLEAR WATER

The perfect setting

We take the work out of water care with industry-leading filtration and advanced active oxygen water treatment. It all lets you focus on what truly matters—relaxing and enjoying.

This is purity perfected.



BEST-IN-CLASS Filtration

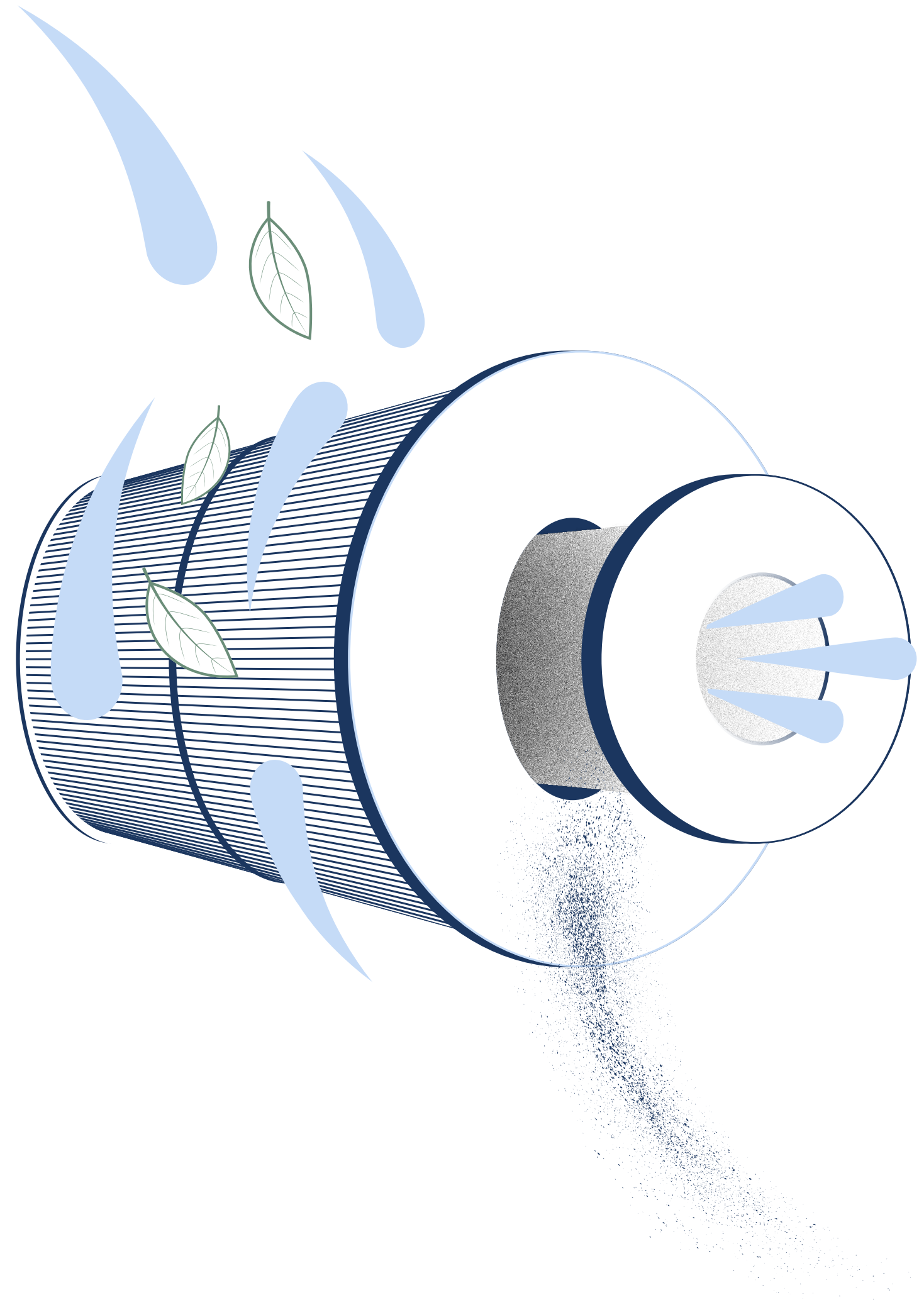
Every Sundance® spa comes with our exclusive dual-stage MicroClean® filtration system¹ that works to ensure the water is always ready when you are.

Step into sparkling water.

Slipstream™ Skimmer
Floating just beneath the surface, the skimmer collects more surface debris than standard systems and traps it in the filter to keep your spa cleaner², longer.

Proprietary Horizontal Filter
Unlike a typical vertical filter, the horizontal position of our pleated filter allows more water to flow through it.

MicroClean Interior Filter
At the heart of the system is an ultra-filtration core that removes even the tiniest of unwanted particles.



¹ Filtration varies by model.
² Clean is defined as the removal of microscopic (down to 3-micron level, varies by model) debris from the water.
MicroClean® Ultra filter shown in diagram.

CLEARRAY® Clean¹ water, simplified

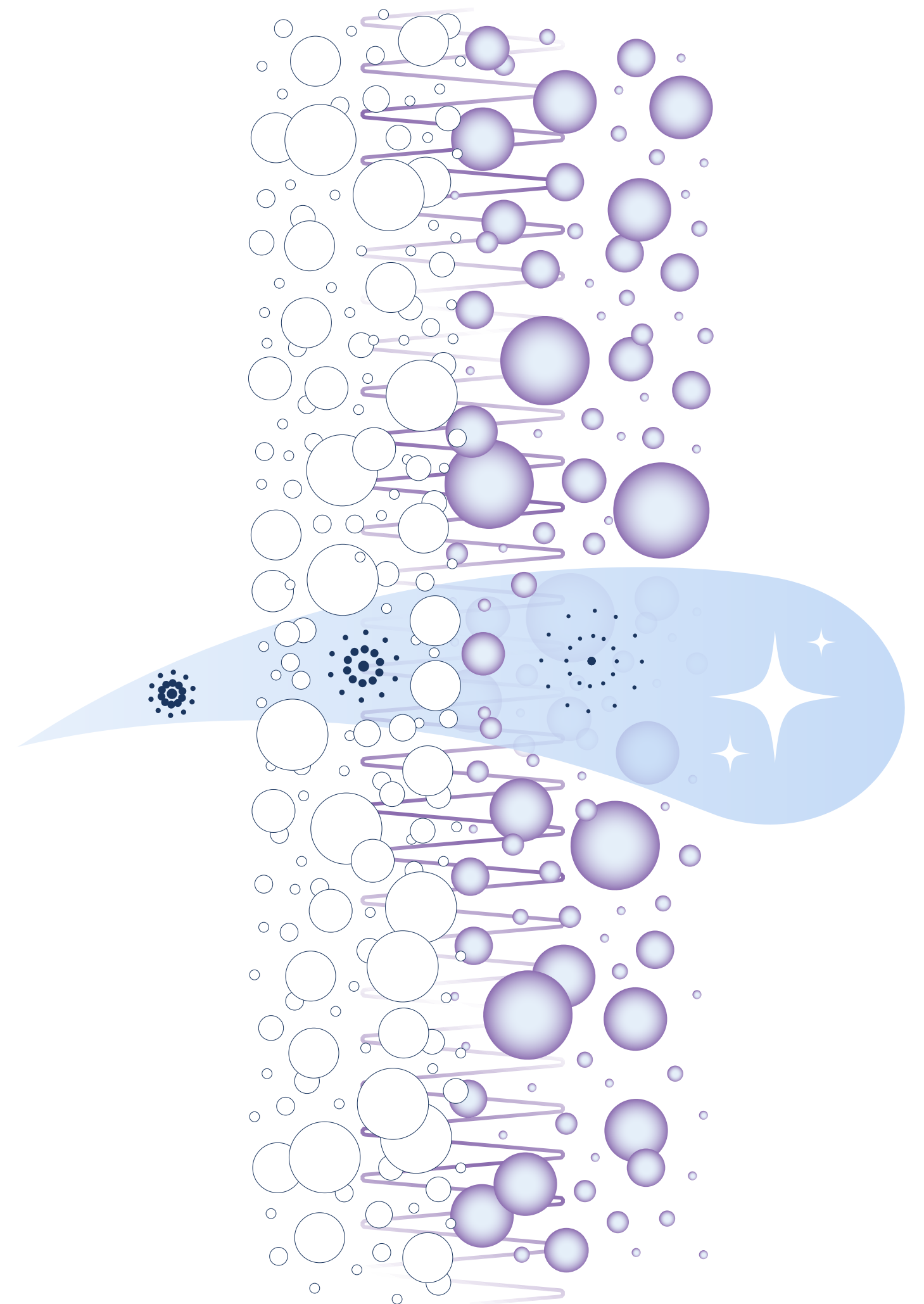
Powerful active oxygen molecules are unlocked for a hands-free approach to water care that works harder and cleans longer.

It cleans while you unwind.

Filtered Water
The MicroClean® filter starts the process by filtering out small particles before the water flows into the system.

UV-C
The UV-C light unlocks active oxygen molecules as the water circulates.

Active Oxygen
The active oxygen molecules clean the water automatically, so your spa is ready to enjoy anytime.



¹ Clean is defined as the removal of microscopic (down to 3-micron level, varies by model) debris from the water.

SMARTTUB®

Tap into total relaxation

Our exclusive SmartTub system is like a remote control and command center that lets you monitor, operate, and protect your Sundance® spa.

Enjoyment made easy.



Control

You can adjust temperature, jets, and lights, and lock down your spa to prevent usage. Set up your own automated usage schedule, receive alerts, and check your spa status, whether you're at home or on the go.

Convenience

You can also track energy usage and enjoy new features, updated automatically. Plus, SmartTub performs daily diagnostic checks to ensure peak performance.

Energy Efficiency

Proprietary Smart Heat Mode optimizes savings by using your spa in the most energy-efficient way possible, such as heating water during off-peak hours.

It can reduce standby power by up to 25% and has a one-touch Vacation Mode that minimizes water heating while you're away.

Peace of Mind

SmartTub sends push notifications for alerts and maintenance reminders.

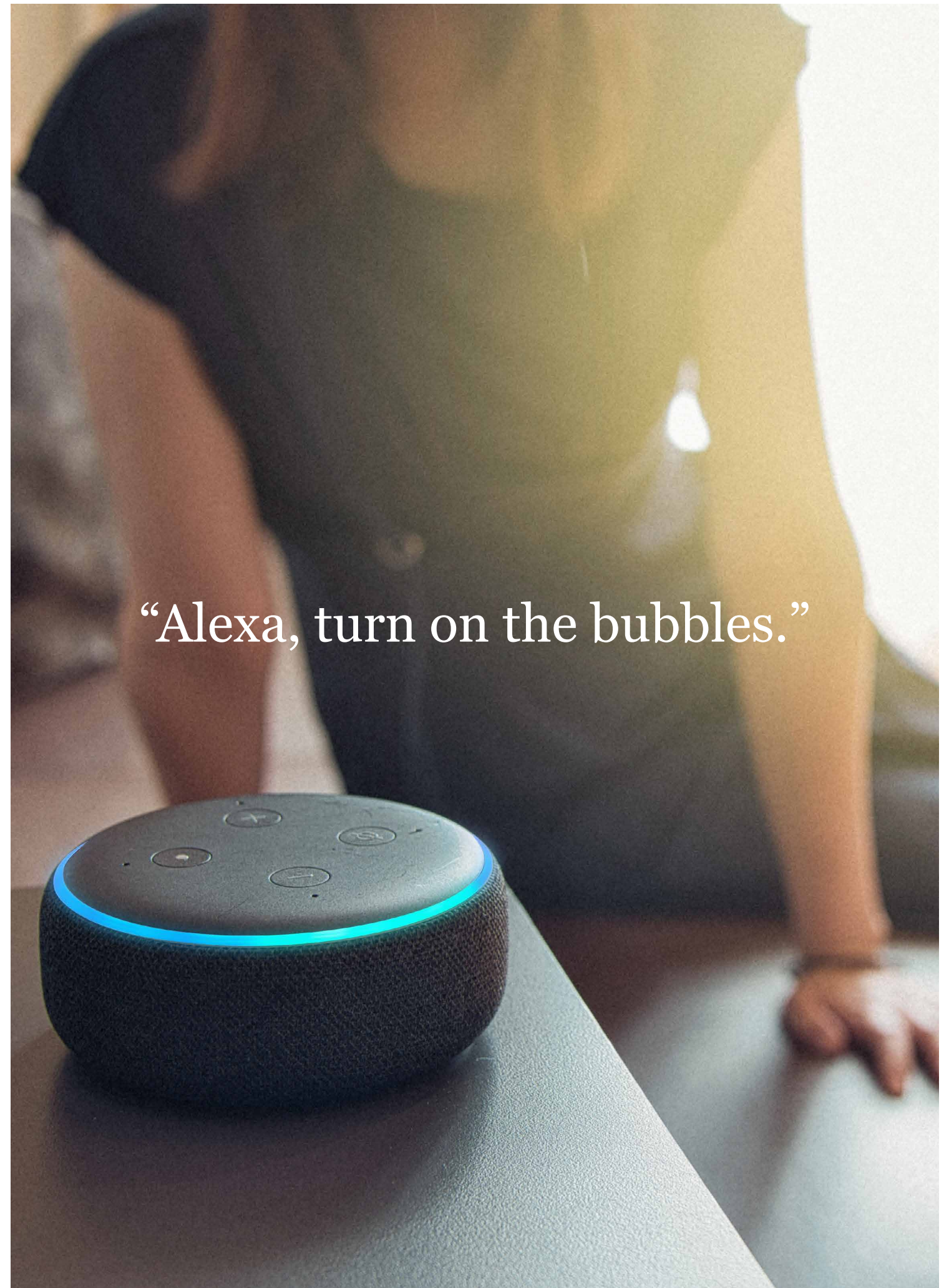
Its patented energy sensor detects power outages to protect against freezing or overheating.

If any issue arises, SmartTub alerts your Sundance dealer who will get in touch with you.

No other system offers this level of high-touch service.



Learn more about SmartTub, including enhanced 24/7 monitoring.



“Alexa, turn on the bubbles.”

CRAFTED Enduring quality

From innovative features, progressive technologies, and iconic designs to the smallest details and finishing touches, there's renowned craftsmanship in every aspect of a Sundance® spa.

Generations of joy start here.

RigidBond™ Shell

Our proprietary shell manufacturing process strengthens the acrylic and increases its ability to retain heat.

Efficient Heater

The premium titanium element¹ is corrosion-resistant, delivering reliable performance and years of family enjoyment.

SunStrong® Cover

Our airtight cover protects your spa from heat loss and debris.

Cabinetry

Our proprietary cabinetry is both durable and low-maintenance, with designs curated to complement your backyard space.

Full Insulation

Reduces the energy required to run your spa, while offering protection from air, moisture, and sound.

Tool-Free Access

Reach critical spa components, including the drain, without tools, to save time and simplify maintenance.

Synthetic Base

Provides a solid foundation that's impervious to moisture and other natural elements.



¹ Depending on model.

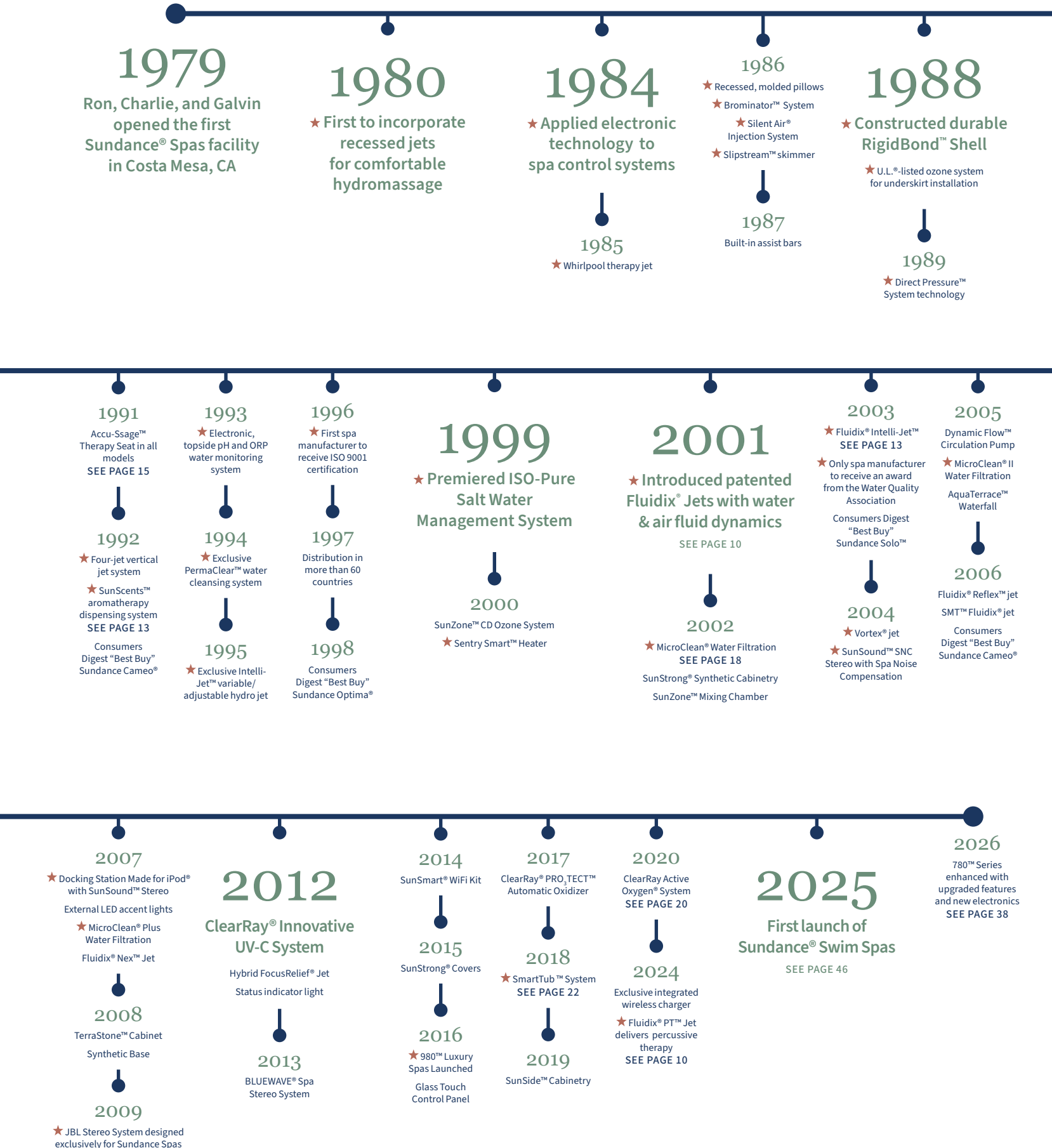
INNOVATION

For over four decades

Sundance has a reputation for innovation and a history of industry firsts. Others may imitate, but no other company can match the Sundance brand when it comes to delivering a phenomenal experience.

Decades of expertise go into every Sundance spa.

★ Industry Firsts by Sundance® Spas



Consider the variety of designs,
features, seating, and size options,
and choose your favorite model.

FIND YOUR

Sundance

Spa

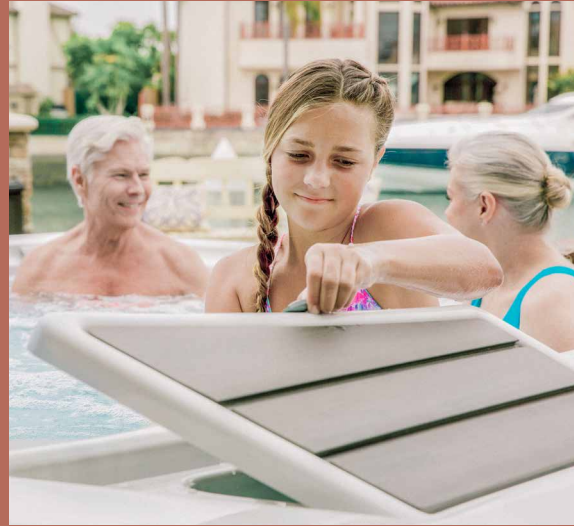
980™ SERIES

Make a bold statement with a superbly crafted spa, rich with features that are ideal for entertaining or simply relaxing.



980™ Features

Insulated Storage Cooler
Integrated into the lounge deck, the SunCooler™ cold storage area puts your beverages within easy reach.



Interior Lighting
Elegant LED lighting highlights the contours of every seat while enhancing safety and setting the mood for nighttime soaks.



Lounge Deck
Enjoy more room to sit and socialize with the favorite people in your life. Also great for cooling down or dipping your toes.



Stylish Cabinetry
Architectural corner lighting emphasizes key design elements of the visually appealing exterior cabinet.



Experience
Patented Fluidix® Jets
and up to 10 Massage Varieties
Specialty Silent Air® Injector Jets
Gentle Soft-Tissue Air Massage
FocusRelief® Jets
Upgraded Accu-Ssage™ Therapy Seat
Illuminated Waterfall
Spacious Seats with LED Lighting
SunScents™ Aromatherapy,
Scents Sold Separately
Premium Glass Touch Control Panel
SmartTub® System
Integrated BLUEWAVE® Stereo

Clear Water
Dynamic Flow™ Circulation Pump
Slipstream™ Skimmer
MicroClean® Ultra Filtration System
ClearRay Active Oxygen® System
ClearRay® On-Demand

Craftsmanship
Robust Synthetic Base
3-Layer RigidBond® Shell
SunStrong® Extreme Cover
Durable Geometric Exterior Cabinetry
Tool-Free Cabinetry
Exterior Lighting
Low Profile for Easy Entry and Exit
Lounge Deck Featuring
Tablet Dock Slots and SunCooler

Options
EcoWrap® Insulation

Kingston™

7'8"x8'4"x2'10" ft / 234x254x87 cm



Claremont®

7'8"x8'4"x2'10" ft / 234x254x87 cm



Acrylic



Platinum Celestite Travertine (matte) Morning Mist (matte) Midnight

Cabinetry



Coastal Mahogany

Specifications may vary by country, please check with your local retailer. All specifications are subject to change without notice. Spas are approximate and shown in L x W x H. See specifications for detailed weight considerations for install. Not all electrical configurations are listed. Please see the Sundance® Spas Hot Tub or Swim Spa Specification Handbook for additional details. The images are for layout reference; they do not reflect acrylic options.

880™ SERIES

Our best-selling spas offer an ideal balance of advanced features, premium comfort, and transformative hydrotherapy.



880™ Features

MicroClean® Ultra II Filtration
Get crystal-clear water with our distinctive horizontal MicroClean Ultra II Filtration system, which combines pleated and spun fibers to deliver an impressive 130 square feet of filtration.



SunScents™ Aromatherapy
Infuses the water with various fragrances that work to calm your mind, invigorate your mood, or boost your energy level without any extra additives in your water.



FocusRelief® Jets
On every 880 model, the FocusRelief jets deliver the perfect deep- or soft-tissue massage for calf therapy, while its Silent Air® injector produces light, refreshing bubbles and can infuse the water with your choice of scent.



Entertainment Package
Designed for superior sound even in open-air settings, the stereo includes two premium 5-inch speakers and an 8-inch subwoofer. Our exclusive on-spa wireless charger keeps your phone powered and out of the way.



Experience
Patented Fluidix® Jets
and up to 10 Massage Varieties
Specialty Silent Air® Injector Jets
Gentle Soft-Tissue Air Massage
Accu-Ssage™ Therapy Seat
PT™ and FocusRelief® Jets
Illuminated Waterfall
Premium Glass Touch Control Panel
SmartTub® System
SunScents™ Aromatherapy,
Scents Sold Separately

Clear Water
Dynamic Flow™ Circulation Pump
Slipstream™ Skimmer
MicroClean® Ultra II Filtration System
ClearRay Active Oxygen® System
ClearRay® On-Demand

Craftsmanship
SunStrong® Steel Frame
Robust Synthetic Base
3-Layer RigidBond® Shell
SunStrong® Cover
SunSide® Cabinetry
Tool-Free Cabinetry
Exterior Lighting
Dual-Purpose Beverage Concierge
Filter Lid
Illuminated Grab Bar

Options
Entertainment Package
with Stereo and Wireless Charger
EcoWrap® Insulation
SunStrong® Extreme Cover

Aspen®

7'5"x9'2"x3'4" ft / 226x280x102 cm



Optima®

7'5"x7'5"x3'1" ft / 226x226x94 cm



Cameo®

7'5"x7'5"x3'1" ft / 226x226x94 cm



Vistamar®

7'x7'x3'1" ft / 214x214x94 cm



Altamar®

7'x7'x3'1" ft / 214x214x94 cm



Marin®

6'4"x7'7"x2'10" ft / 194x232x87 cm



Capri®

5'9"x6'10"x2'7" ft / 176x209x78 cm



Acrylic



Platinum Celestite Travertine (matte) Morning Mist (matte) Midnight

Cabinetry



Windy Oak Flint Gray Ironwood

Specifications may vary by country, please check with your local retailer. All specifications are subject to change without notice. Spas are approximate and shown in L x W x H. See specifications for detailed weight considerations for install. Not all electrical configurations are listed. Please see the Sundance® Spas Hot Tub or Swim Spa Specification Handbook for additional details. The images are for layout reference; they do not reflect acrylic options.

780™ SERIES

All the right features
for all your best moments,
at a value that makes it
all possible. Now it's time
to make it all happen.

780



780™ Features

Glass Touch Control Panel

With a sophisticated display and intuitive navigation, adjusting jets, lighting, and temperature has never felt so effortless.



SunSide® Cabinetry

Available in a range of timeless colors, the stylish cabinetry is tool-free and UV-treated for fade resistance and protection from sun damage.



Fluidix® Jets

Utilizing a unique blend of air and water, our patented Fluidix jets—including the powerful, adjustable Intelli-Jet™—have been strategically positioned within each massage seat.



Illuminated Waterfall

Vivid, multicolored LED lights illuminate the waterfall as it gracefully flows into the water, enhancing the peaceful ambiance.



Experience

Patented Fluidix® Jets
and up to 7 Massage Varieties
Swedish Massage Seat

Accu-Pressure™ Therapy Seat

Fluidix® Intelli-Jet™ and Reflex™ Jet

Illuminated Waterfall

Glass Touch Control Panel

SmartTub® System

Clear Water

Dynamic Flow™ Circulation Pump

Slipstream™ Skimmer

MicroClean® Ultra II Lite Filtration System

ClearRay Active Oxygen® System

ClearRay® On-Demand

Craftsmanship

Synthetic Base

3-Layer RigidBond® Shell

SunStrong® Cover

SunSide Cabinetry

Tool-Free Cabinetry

Integrated Exterior LED Indicator Light

Exterior Lighting

Options

BLUEWAVE® Stereo

EcoWrap® Insulation

SunStrong® Extreme Cover

Chelsee®

7'5"x7'5"x3'2" ft / 226x226x96 cm



Hamilton™

7'5"x7'5"x3'2" ft / 226x226x96 cm



Bristol®

7'x7'x3'2" ft / 214x214x96 cm



Montclair™

6'3"x7'7"x2'11" ft / 191x231x88 cm



Dover™

5'9"x6'10"x2'7" ft / 176x209x79 cm



Acrylic



Platinum



Celestite



Travertine
(matte)



Morning Mist
(matte)



Midnight

Cabinetry



Brushed
Gray



Vintage
Oak



Modern
Hardwood

Specifications may vary by country, please check with your local retailer. All specifications are subject to change without notice. Spas are approximate and shown in L x W x H. See specifications for detailed weight considerations for install. Not all electrical configurations are listed. Please see the Sundance® Spas Hot Tub or Swim Spa Specification Handbook for additional details. The images are for layout reference; they do not reflect acrylic options.

680™ SERIES

It's easy to love a 680 Series spa, and not only for the fun and relaxing moments. You'll also appreciate its superior durability and value with features like ClearRay Active Oxygen® system and exterior lighting.



680™ Features

MicroClean® Mini-Compatible Filter¹

A unique blend of pleated and spun bound fibers delivers powerful filtration. Fully compatible with the MicroClean Mini Filtration system.



Easy-Access Cabinetry

Sleek, tool-free panels make maintenance effortless—while protecting your investment and extending the life of your spa.



Slipstream™ Skimmer

Floating just beneath the surface, the skimmer collects more surface debris than standard systems and traps it in the filter to keep your spa cleaner,² longer.



Wide-Sheet Waterfall³

A gentle cascade flows into the spa, adding a soothing soundscape and enhancing your sense of tranquility.



¹ Includes 75sq ft horizontal pleated filter. MicroClean® Mini filters sold separately.

² Clean is defined as the removal of microscopic (down to 3-micron level, varies by model) debris from the water.

³ Only on select models.

Experience

Up to 6 Adjustable Massage Options

Proprietary Jets

Waterfall³

Simplified Control Panel

Clear Water

Slipstream Skimmer

75ft² Pleated Filter

MicroClean® Mini-Compatible Filter

ClearRay Active Oxygen® System

Craftsmanship

Synthetic Base

3-Layer RigidBond® Shell

SunStrong® Cover

Tool-Free Cabinetry

Exterior Lighting

Options

SunStrong® Extreme Cover

SmartTub® System

McKinley®

7'5"x7'5"x3' ft / 226x226x92 cm



Edison®

7'x7'x3' ft / 214x214x92 cm



Peyton™

7'x7'x3' ft / 214x214x92 cm



Prado®

6'8"x6'8"x2'9" ft / 203x203x84 cm



Alicia™

5'9"x6'8"x2'9" ft / 176x204x84 cm



Acrylic



Platinum



Celestite



Travertine (matte)



Morning Mist (matte)

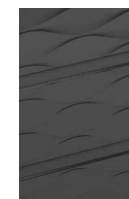


Midnight

Cabinetry




Slate



Graphite

Specifications may vary by country, please check with your local retailer. All specifications are subject to change without notice. Spas are approximate and shown in L x W x H. See specifications for detailed weight considerations for install. Not all electrical configurations are listed. Please see the Sundance® Spas Hot Tub or Swim Spa Specification Handbook for additional details. The images are for layout reference; they do not reflect acrylic options.

An aerial photograph of a Sundance swim spa installed in a backyard. The spa is a large, rectangular unit with a light-colored deck and a dark interior. It features a hot tub section with several jets and a larger swimming area. The surrounding area is lush green grass and some shrubs. The overall scene is bright and sunny.

Whether you're cooling off in summer, warming up in winter, or enjoying a refreshing workout, Sundance swim spas can do it all. Swim or soak year-round in your all-in-one backyard escape for relaxation, fitness, and fun.

Sundance[®] Swim Spas



SUNDANCE®
Relaxation
Family time
Fitness
Play
Swim Spas

SWIM SPAS

All seasons, all reasons

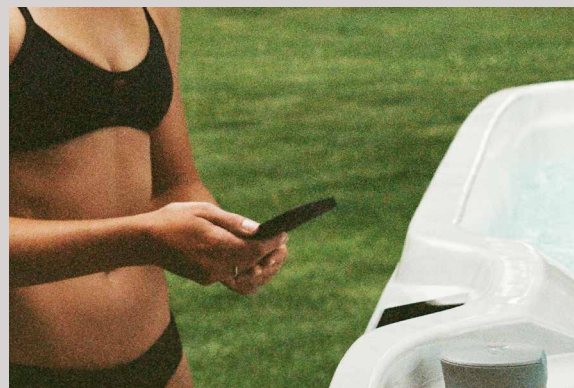
Unparalleled Hydromassage
Enjoy the signature Sundance® massage on every swim spa seat and dual lounge, as dedicated massage pumps power our versatile, high-performance Fluidix® jets.



Best-in-Class Water Filtration
With our distinctive horizontal MicroClean® Ultra Filtration System and active oxygen water treatment, you get crystal-clear water so your spa is always fresh, clean¹, and ready



Control from Anywhere
With SmartTub® technology, you can manage your spa right from your phone, so it's always the perfect temperature when you're ready to dive in.



¹ Clean is defined as the removal of microscopic (down to 3-micron level, varies by model) debris from the water.

SURF™ SERIES

The Surf Series features an extra-wide swim lane powered by two dedicated high-performance swim pumps. Its adjustable current creates a customizable swim experience the whole family can enjoy all year long.

Surf



Surf™ Features

Enhanced Swim System

Built with the serious swimmer in mind—but enjoyable for the entire family—the Surf Series features two dedicated swim pumps and a 10-speed swim selector control within easy reach, ensuring everyone can find their perfect pace.



Extra-Wide Swim Lane

A spacious, open swim tank with an extra-wide lane gives you plenty of room to refine your stroke or challenge your pace. Dual lane-extender jets generate a full-body current, maximizing every inch of space for a more immersive and uninterrupted swim experience.



Custom Control Panel Placement

For added convenience and design flexibility, the intuitive touchscreen control panel can be positioned on either side of the swim spa, so it best fits how you use your space.



Swim

- Swim Selector Control
- 2 Dedicated Swim Pumps
- 2 Wide-Stream Surf™ Swim Jets and 2 Lane-Extender Jets
- 2 Buoyancy Jets
- 2 Lane-Balancing Jets
- Integrated Swim Lane Indicator
- Stainless Steel Swim Bar

Experience

- Patented Fluidix® Jets and 6 Massage Varieties
- Dual Full-Body Lounges with Swedish Massage
- Accu-Ssage™ Therapy Seat
- Percussive Therapy Seat
- PT™ and FocusRelief® Jets
- Illuminated Waterfall
- Premium Glass Touch Control

Clear Water

- Slipstream™ Skimmer
- MicroClean® Ultra Filtration System
- ClearRay Active Oxygen® System
- Dynamic Flow™ Circulation Pump

Craftsmanship

- SunStrong® Steel Frame
- 3-Layer RigidBond® Shell
- SunSide® Cabinetry
- Exterior Lighting
- Convenient Storage Bins
- Non-Slip Mats
- Heat-Pump Ready

Options

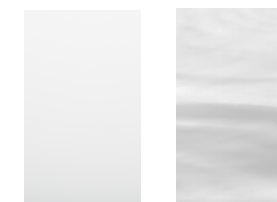
- SmartTub® System
- Sundance® Fitness Kit
- 2nd Auxiliary Heater

Surf™ 17

7'8"x17'5"x4'5" ft / 234x529x134 cm



Acrylic



Porcelain Platinum

Cabinetry



Windy Oak Flint Gray Ironwood

Specifications may vary by country, please check with your local retailer. All specifications are subject to change without notice. Spas are approximate and shown in L x W x H. See specifications for detailed weight considerations for install. Not all electrical configurations are listed. Please see the Sundance® Spas Hot Tub or Swim Spa Specification Handbook for additional details. The images are for layout reference; they do not reflect acrylic options.

STREAM™ SERIES

The Stream Series offers dual hydromassage lounges, shallow seats for kids, and the powerful Fluidix® hydromassage Sundance is known for. It's the perfect mix of relaxation, swimming, and family fun.

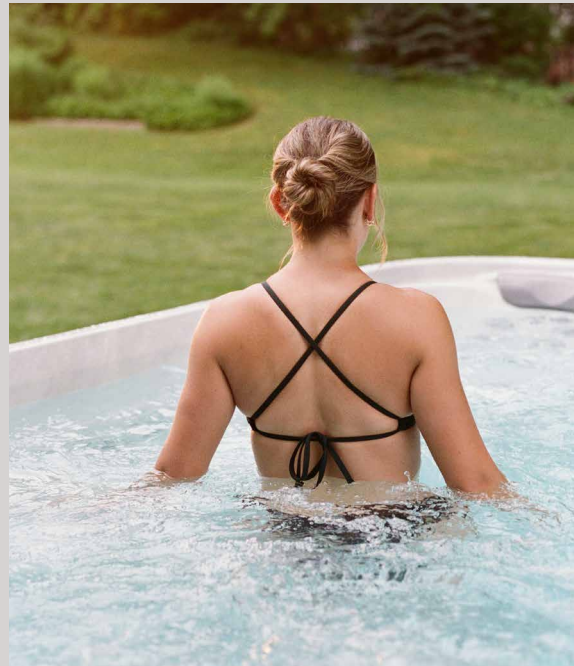
Stream



Stream™ Features

Steady Current

Whether it's splash time for the kids, or a daily swim or low-impact workout for you, the Stream Series jets provide a smooth current that meets everyone's needs without overpowering anyone.



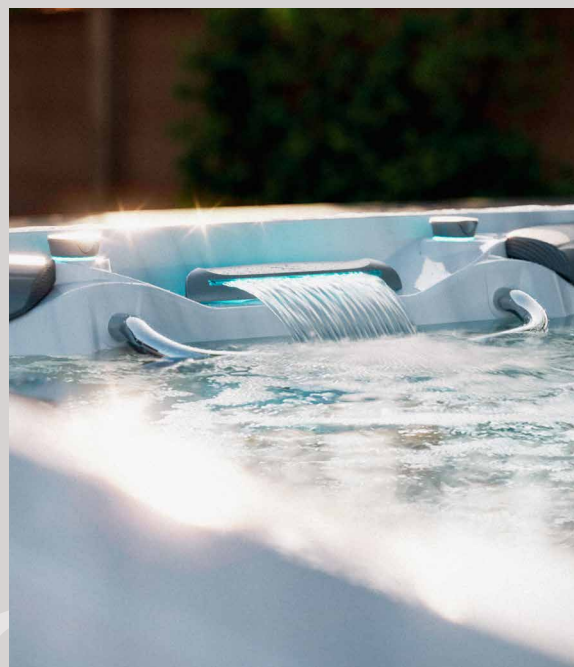
Unbeatable Hydromassage

Relax in dual Swedish massage lounges while kids enjoy two shallow seats in the Stream Series. Find the right fit in the spacious swim of the 17, or in the compact 13 with its additional bench seating.



Built-In Swim Support

A sturdy stainless steel swim bar above the swim jets is the perfect place to hold on—for kids learning to swim and adults perfecting their form. An anchor point above the swim bar also facilitates resistance training exercises. Floor mats add traction where you need it.



Swim

- 1 Dedicated Swim Pump
- 2 Stream™ Swim Jets
- Integrated Swim Lane Indicator
- Stainless Steel Swim Bar

Experience

- Patented Fluidix® Jets and 6 Massage Varieties
- Dual Full-Body Lounges with Swedish Massage
- Accu-Ssage™ Therapy Seat
- Percussive Therapy Seat
- PT™ and FocusRelief® Jets
- Illuminated Waterfall
- Premium Glass Touch Control

Clear Water

- Slipstream™ Skimmer
- MicroClean® Ultra Filtration System
- ClearRay Active Oxygen® System
- Dynamic Flow™ Circulation Pump

Craftsmanship

- SunStrong® Frame
- 3-Layer RigidBond® Shell
- SunSide® Cabinetry
- Exterior Lighting
- Convenient Storage Bins
- Non-Slip Mats
- Heat-Pump Ready

Options

- SmartTub® System
- Sundance® Fitness Kit
- 2nd Auxiliary Heater

Stream™ 17

7'8"x17'5"x4'5" ft / 234x529x134 cm

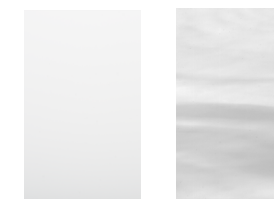


Stream™ 13

7'8"x12'5"x4'2" ft / 234x377x127 cm



Acrylic



Porcelain

Platinum

Cabinetry



Windy Oak

Flint Gray

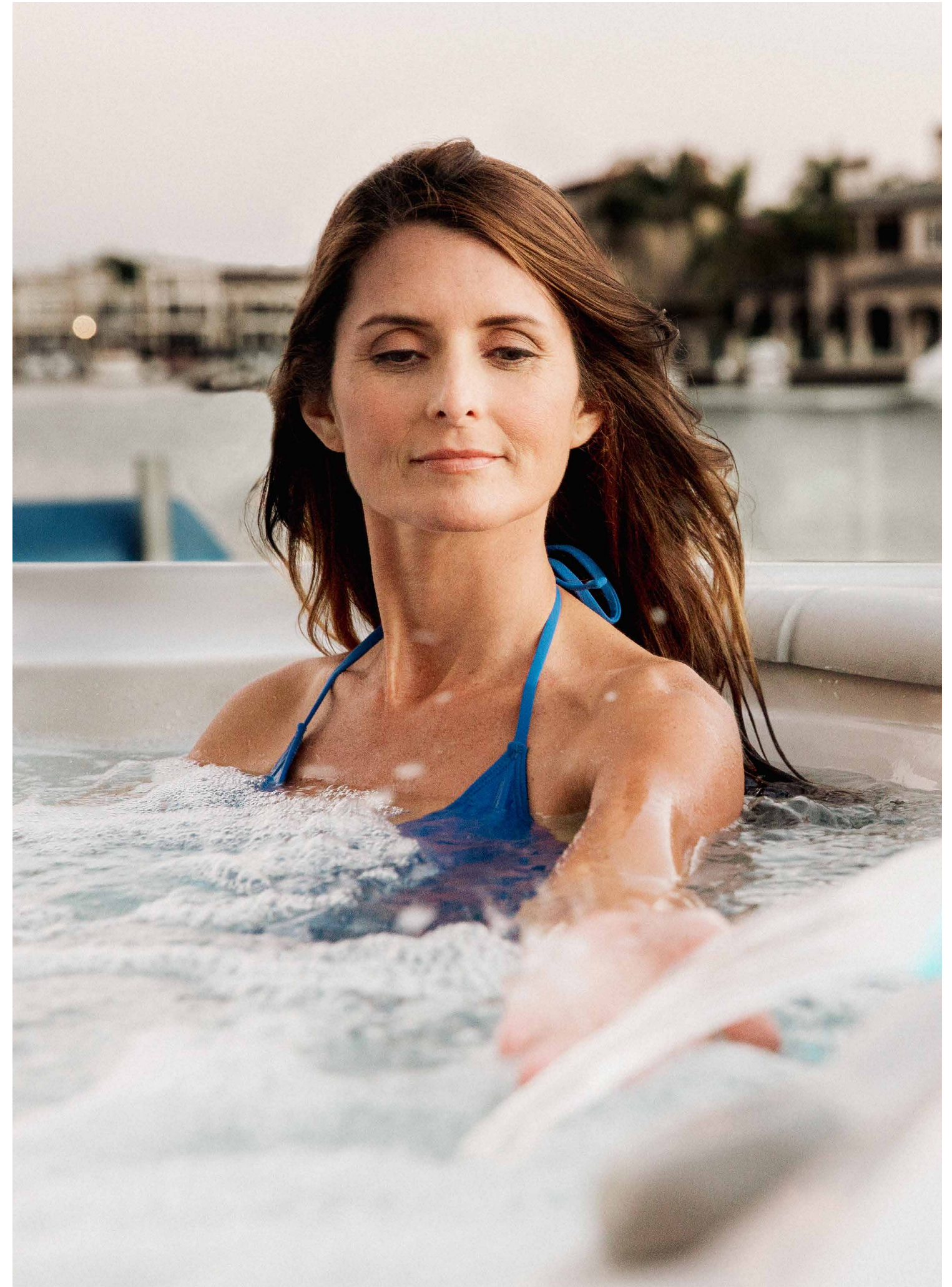
Ironwood

Specifications may vary by country, please check with your local retailer. All specifications are subject to change without notice. Spas are approximate and shown in L x W x H. See specifications for detailed weight considerations for install. Not all electrical configurations are listed. Please see the Sundance® Spas Hot Tub or Swim Spa Specification Handbook for additional details. The images are for layout reference; they do not reflect acrylic options.

FINDING The one

Take a closer look at each series,
compare sizes and seating options,
and fall in love with your perfect
Sundance® spa or swim spa.

Your story begins here.



Swim Spas

Surf™ 17

Surf™ Series
7'8"x17'5"x4'5" ft
234x529x134 cm



Stream™ 17

Stream™ Series
7'8"x17'5"x4'5" ft
234x529x134 cm



Stream™ 13

Stream™ Series
7'8"x12'5"x4'2" ft
234x377x127 cm



Dry Weight
Average Filled Weight
Average Spa Volume
Swim Tank Length
Swim Features

Total Jets
Massage Variety
Soft-Tissue Air Massage
Filtration System
Total Swim Pumps
Total Jet Pumps
Electrical

Surf™ 17

2,860 lbs (1,298 kg)
18,960 lbs (8,603 kg)
1,929 gal (7,306 liters)
14 ft (427 cm)
Extra-Wide Swim Lane
Swim Selector Control
Swim Bar
48 Massage and 8 Swim
6
—
MicroClean® Ultra
2
2
240 VAC @ 60A

Stream™ 17

2,860 lbs (1,298 kg)
18,960 lbs (8,603 kg)
1,929 gal (7,306 liters)
14 ft (427 cm)
Dedicated Swim Pump
Spacious Swim Tank
Swim Bar
48 Massage and 2 Swim
6
—
MicroClean® Ultra
1
2
240 VAC @ 50A

Stream™ 13

1,748 lbs (793 kg)
9,790 lbs (4,442 kg)
964 gal (3,650 liters)
9 ft 4 in (285 cm)
Dedicated Swim Pump
Swim Bar
48 Massage and 2 Swim
6
—
MicroClean® Ultra
1
2
240 VAC @ 50A

Specifications may vary by country, please check with your local retailer. All specifications are subject to change without notice.
Swim spa dimensions are approximate and shown in L x W x H. The images are for layout reference; they do not reflect acrylic options.
See specifications for detailed weight considerations for installation. Please see the Sundance® Swim Spas Specification Handbook for additional details.

6+ Seats

Kingston™

980™ Series
7'8"x8'4"x2'10" ft
234x254x87 cm



Aspen®

880™ Series
7'5"x9'2"x3'4" ft
226x280x102 cm



Chelsee®

780™ Series
7'5"x7'5"x3'2" ft
226x226x96 cm



McKinley®

680™ Series
7'5"x7'5"x3' ft
226x226x92 cm



Optima®

880™ Series
7'5"x7'5"x3'1" ft
226x226x94 cm



Vistamar®

880™ Series
7'x7'x3'1" ft
214x214x94 cm



Edison®

680™ Series
7'x7'x3' ft
214x214x92 cm



Dry Weight
Average Filled Weight
Average Spa Volume
Total Jets
Massage Variety
Soft-Tissue Air Massage
Filtration System
Total Jet Pumps
Electrical

Kingston™
1,048 lbs (476 kg)
4,392 lbs (1,993 kg)
401 gal (1,518 liters)
57 and 12 Air Injector Jets
8
Yes
MicroClean® Ultra
3
240 VAC @ 50A or 60A

Aspen®
1,240 lbs (563 kg)
5,577 lbs (2,530 kg)
520 gal (1,969 liters)
66 and 6 Air Injector Jets
10
Yes
MicroClean® Ultra II
3
240 VAC @ 50A or 60A

Optima®
944 lbs (429 kg)
4,363 lbs (1,980 kg)
410 gal (1,553 liters)
49 and 8 Air Injector Jets
9
Yes
MicroClean® Ultra II
2
240 VAC @ 40A, 50A, or 60A

Vistamar®
874 lbs (397 kg)
3,626 lbs (1,645 kg)
330 gal (1,250 liters)
41 and 10 Air Injector Jets
9
Yes
MicroClean® Ultra II
2
240 VAC @ 40A, 50A, or 60A

Chelsee®
873 lbs (396 kg)
4,001 lbs (1,815 kg)
375 gal (1,420 liters)
41
7
—
MicroClean® Ultra II Lite
2
240 VAC @ 40A, 50A, or 60A

McKinley®
787 lbs (357 kg)
4,248 lbs (1,927 kg)
415 gal (1,571 liters)
42
6
—
MicroClean® Mini-compatible ¹
2
240 VAC @ 40A, 50A, or 60A

Edison®
737 lbs (335 kg)
3,656 lbs (1,659 kg)
350 gal (1,325 liters)
36
6
—
MicroClean® Mini-compatible ¹
2
240 VAC @ 40A, 50A, or 60A

Specifications may vary by country, please check with your local retailer. All specifications are subject to change without notice. Spa dimensions are approximate and shown in L x W x H. The images are for layout reference; they do not reflect acrylic options. See specifications for detailed weight considerations for installation. Please see the Sundance® Spas Specification Handbook for additional details.
¹ Includes horizontal pleated filter, MicroClean® Mini Filter sold separately.



5-6 Seats

Claremont®

980™ Series
7'8"x8'4"x2'10" ft
234x254x87 cm
Lounge



Cameo®

880™ Series
7'5"x7'5"x3'1" ft
226x226x94 cm
Lounge



Bristol®

780™ Series
7'x7'x3'2" ft
214x214x96 cm
Lounge



Peyton™

680™ Series
7'x7'x3' ft
214x214x92 cm
Lounge



Altamar®

880™ Series
7'x7'x3'1" ft
214x214x94 cm
Lounge



Hamilton™

780™ Series
7'5"x7'5"x3'2" ft
226x226x96 cm
Lounge



Prado®

680™ Series
6'8"x6'8"x2'9" ft
203x203x84 cm



Dry Weight
Average Filled Weight
Average Spa Volume
Total Jets
Massage Variety
Soft-Tissue Air Massage
Filtration System
Total Jet Pumps
Electrical

Claremont®

1,045 lbs (475 kg)
4,423 lbs (2,007 kg)
405 gal (1,534 liters)
59+6 Air Injector Jets
10
Yes
MicroClean® Ultra
3
240 VAC @ 50A or 60A

Cameo®

889 lbs (404 kg)
3,975 lbs (1,804 kg)
370 gal (1,401 liters)
53+6 Air Injector Jets
10
Yes
MicroClean® Ultra II
2
240 VAC @ 40A, 50A, or 60A

Altamar®

850 lbs (386 kg)
4,103 lbs (1,862 kg)
390 gal (1,477 liters)
40+6 Air Injector Jets
9
Yes
MicroClean® Ultra II
2
240 VAC @ 40A, 50A, or 60A

Hamilton™

826 lbs (375 kg)
3,912 lbs (1,775 kg)
370 gal (1,401 liters)
41
7
—
MicroClean® Ultra II Lite
2
240 VAC @ 40A, 50A, or 60A

Bristol®

745 lbs (338 kg)
3,539 lbs (1,606 kg)
335 gal (1,269 liters)
38
7
—
MicroClean® Ultra II Lite
2
240 VAC @ 40A, 50A, or 60A

Peyton™

736 lbs (334 kg)
3,572 lbs (1,621 kg)
340 gal (1,288 liters)
34
6
—
MicroClean® Mini-compatible¹
2
240 VAC @ 40A, 50A, or 60A

Prado®

603 lbs (274 kg)
3,555 lbs (1,613 kg)
354 gal (1,341 liters)
26
5
—
MicroClean® Mini-compatible¹
1
120 VAC @ 15A or
240 VAC @ 30A or 40A

Specifications may vary by country, please check with your local retailer. All specifications are subject to change without notice. Spa dimensions are approximate and shown in L x W x H. The images are for layout reference; they do not reflect acrylic options. See specifications for detailed weight considerations for installation. Please see the Sundance® Spas Specification Handbook for additional details.
¹ Includes horizontal pleated filter, MicroClean® Mini Filter sold separately.

4-5 Seats

Marin®

880™ Series
6'4"x7'7"x2'10" ft
194x232x87 cm
Lounge



Montclair™

780™ Series
6'3"x7'7"x2'11" ft
191x231x88 cm
Lounge



	Marin®	Montclair™
Dry Weight	838 lbs (381 kg)	790 lbs (359 kg)
Average Filled Weight	3,465 lbs (1,572 kg)	3,292 lbs (1,494 kg)
Average Spa Volume	315 gal (1,193 liters)	300 gal (1,136 liters)
Total Jets	45+4 Air Injector Jets	30
Massage Variety	9	7
Soft-Tissue Air Massage	Yes	—
Filtration System	MicroClean® Ultra II	MicroClean® Ultra II Lite
Total Jet Pumps	2	2
Electrical	240 VAC @ 40A, 50A, or 60A	240 VAC @ 40A, 50A or 60A

Specifications may vary by country, please check with your local retailer. All specifications are subject to change without notice. Spa dimensions are approximate and shown in L x W x H. The images are for layout reference; they do not reflect acrylic options. See specifications for detailed weight considerations for installation. Please see the Sundance® Spas Specification Handbook for additional details.
1 Includes horizontal pleated filter, MicroClean® Mini Filter sold separately.

2-3 Seats

Capri®

880™ Series
5'9"x6'10"x2'7" ft
176x209x78 cm
Lounge



Alicia™

680™ Series
5'9"x6'8"x2'9" ft
176x204x84 cm



	Capri®	Alicia™
Dry Weight	660 lbs (300 kg)	583 lbs (265 kg)
Average Filled Weight	2,662 lbs (1,208 kg)	2,418 lbs (1,097 kg)
Average Spa Volume	240 gal (909 liters)	220 gal (833 liters)
Total Jets	36+4 Air Injector Jets	21
Massage Variety	7	3
Soft-Tissue Air Massage	Yes	—
Filtration System	MicroClean® Ultra II	MicroClean® Mini-compatible ¹
Total Jet Pumps	1	1
Electrical	240 VAC @ 40A or 50A	120 VAC @ 15A or 240 VAC @ 30A or 40A

Specifications may vary by country, please check with your local retailer. All specifications are subject to change without notice. Spa dimensions are approximate and shown in L x W x H. The images are for layout reference; they do not reflect acrylic options. See specifications for detailed weight considerations for installation. Please see the Sundance® Spas Specification Handbook for additional details.
1 Includes horizontal pleated filter, MicroClean® Mini Filter sold separately.

Dover®

780™ Series
5'9"x6'10"x2'7" ft
176x209x79 cm



	Dover®	Alicia™
Dry Weight	620 lbs (282 kg)	583 lbs (265 kg)
Average Filled Weight	2,497 lbs (1,133 kg)	2,418 lbs (1,097 kg)
Average Spa Volume	225 gal (852 liters)	220 gal (833 liters)
Total Jets	23	21
Massage Variety	6	3
Soft-Tissue Air Massage	—	—
Filtration System	MicroClean® Ultra II Lite	MicroClean® Mini-compatible ¹
Total Jet Pumps	1	1
Electrical	120 VAC @ 15A or 240 VAC @ 30A or 40A	120 VAC @ 15A or 240 VAC @ 30A or 40A

From the responsive service
of our expert dealers and after-
sales care teams to the assurance
of a solid warranty, you'll love
the Sundance experience.

JOIN THE
Sundance[®]
family

PRESENCE

Growing together

Over the past 45 years, we've earned a reputation for integrity and growing from our California roots to build a global footprint. With over 400 local retailers in more than 60 countries, we'll be there when you need us.

We invite you to join the Sundance family.

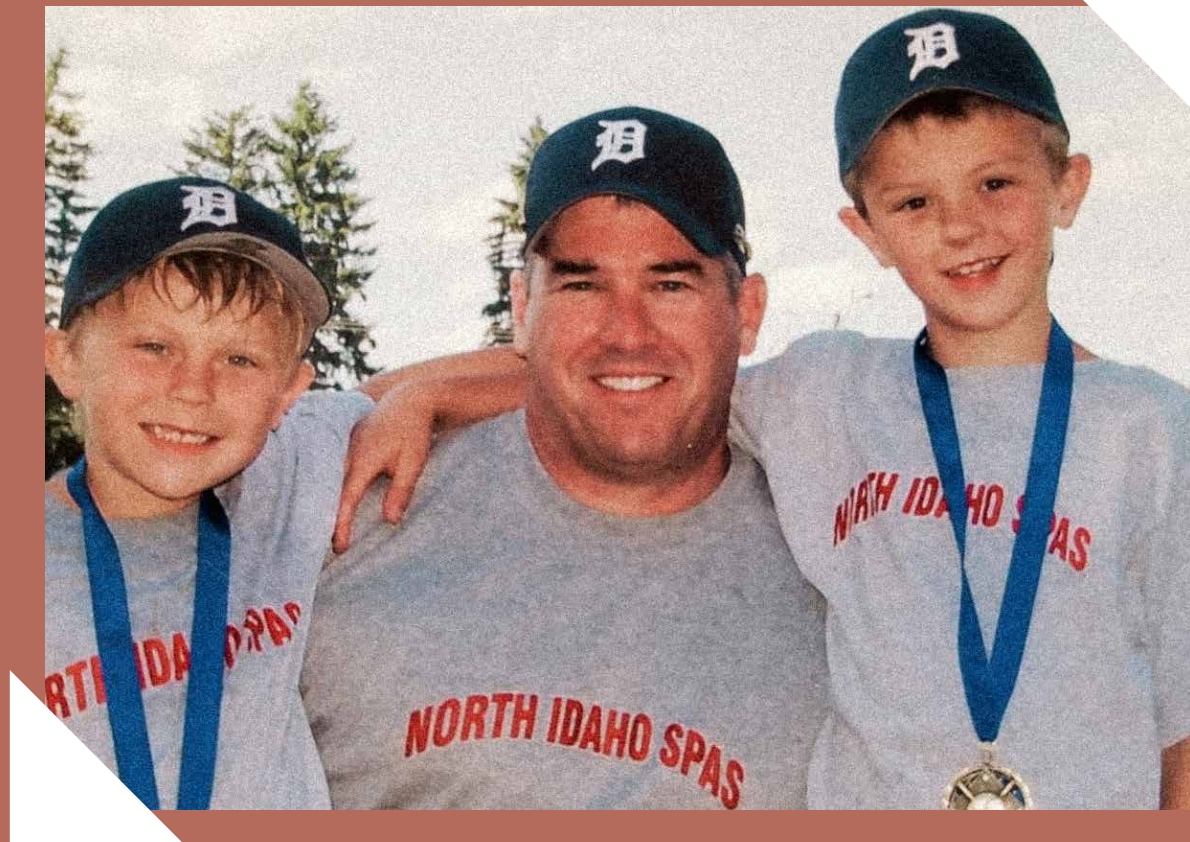
Algeria
Australia
Austria
Belgium
Bulgaria
Canada
Canary Islands
China
Colombia
Costa Rica
Croatia
Cyprus
Czech Republic
Egypt
Estonia
France
French Polynesia
Germany
Greece
The Grenadines
Hong Kong
Hungary
Iceland
India
Indonesia
Ireland
Israel
Italy
Japan
Kenya
Latvia
Liechtenstein
Lithuania
Luxembourg
Malaysia
Maldives
Malta
Mexico
Montenegro
Morocco
Netherlands
Netherlands Antilles
New Zealand
Nigeria
Norway
Panama
Philippines
Poland
Portugal
Romania
Singapore
Slovakia
South Korea
Sri Lanka
St. Vincent
Switzerland
Taiwan
Thailand
Turkey
United Kingdom
United States
Uruguay
Vietnam
Virgin Islands



A world of Sundance® Spas

SERVICE

Part of the Family



We take great pride in partnering with exceptional retailers who share our passion for quality and customer care. This year, it's a family celebration as we recognize North Idaho Spas as our Dealer of the Year.

Since 1995, the Connolly family has championed the Sundance brand, with Tyler and Garrett growing up alongside their father in the business. Together, they've served the Northern Idaho region with dedication and integrity, embodying the spirit of Sundance in every connection they make.





Love, love, love my Sundance spa
and won't ever buy anything else.

Manpreet from Beaumont

Just purchased my third
Sundance Spa and am extremely
happy with it as well as the exceptional
service from the dealer.

Brad from Edmonton

*Great massage and easy to use [as]
I am a new hot tub owner.
I have severe back pain with numbness.
After 20 min a day, I can go
without pain for 1-2 hrs.*

Teri from Colorado

Live the Sundance® life

We narrowed down our spa search to Sundance
and another brand. We chose Sundance due to their customer
service history, the knowledge, friendliness, and honest
dealer at Sunspa Calgary.

Carrie from Calgary

*The quality of my Sundance
spa is top notch and the service
we received from Terry the owner
of the spa store was awesome.*

Olga from Brighton

Our Sundance spa is the best
purchase we've ever made...
should have bought this years ago.
It's our family happy place.

Laura from Sacramento

Sunlight dances with water
The mood lifts like steam
Conversations flow easily
Memories bubble up
Stress floats away

There's a perfect spot for everyone.

SundanceSpas.com
14525 Monte Vista Avenue
Chino, California 91710

©2025 Sundance Spas, Inc. All rights reserved. Sundance® is a registered trademark of Sundance Spas, Inc. All other brands, product names, company names, trade names, and trademarks used are the property of their respective owners. Sundance may add to, change, or remove any part of these materials at any time, without notice. Reproduction in whole or in part without written permission is prohibited. International products may be configured differently to meet local electrical requirements. Dimensions are approximate.

Part No: 6890-2026A
10/25

Sundance® Spas